

NOTES1:

- UL Standard
- 1. Rated voltage/current : 300V / 70A
- 2. Withstanding voltage : AC1600V/1Min.
- 3. Wire range : 20~4AWG

IEC Standard

1. Pollution degree	2	2	3
Overvoltage category	II	III	III
Rate impulse voltage(kV)	8kV	8kV	8kV
Rate voltage(V)	1000V	1000V	1000V
Rate current(A)	76A		

2. Wire range : 0.2~16.0mm²

NOTES2:

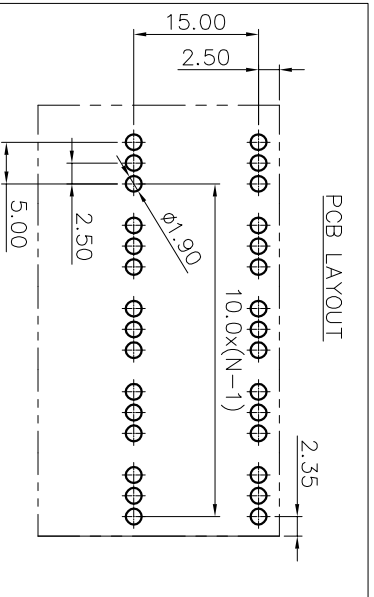
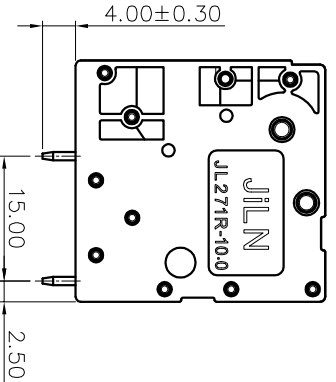
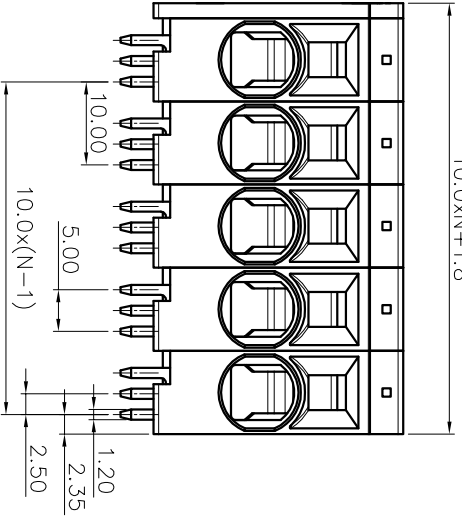
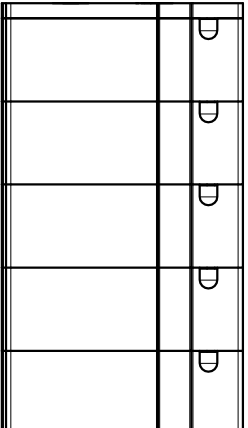
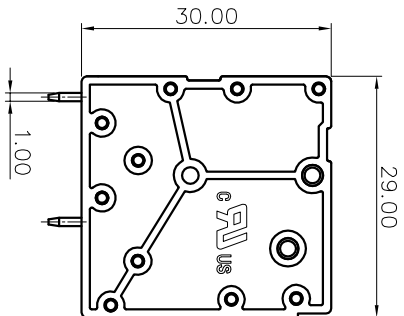
- 1. Dimension shall be interpreted per ASME Y14.5-2009
- 2. Stripping length : 17~18mm
- 3. Operating temperature: -40°C~+105°C
- 4. Undimensioned tolerances:
- 5. RoHS Compliance

Pitch range in mm		Nominal dimension range in mm		Tolerance	
Over	TO	Over	TO	Over	TO
6	10	30	60	100	150
10	24	30	60	100	150
15	20	50	70	100	130
20	30	50	70	100	130

Ordering Information

JL271R - 100 XX G 0 1

Pitch 100=10.0PH
 No. of pins 1P~24P
 Housing Color B=Black G=Green U=Blue R=Red W=White Y=Yellow D=Orange E=Grey
 Packing 0=Pe 1=Bo 2=Tu 3=Tray



REVISION RECORD			
REV	ECN	DESCRIPTION	DRFT DATE
A0		NEW	21.08.21

DRAW	SHUANGPING ZHENG	SCALE	FIT	<p>JIN 东莞市锦凌电子有限公司 DONGGUAN JINLING ELECTRONIC CO., LTD</p>
CHECK	LICHAD LIU	UNIT	mm	
APPROVE	YONGLIANG GAO	SIZE	A4	
		SHEET	1/1	PART NO.
		PRD		JL271R-100XXG01
				TITLE:
				JL271R-10.0-XXP弹簧式/弯脚/双排绿色