

特征 Features

宽阻值范围	Wide resistance range
电流能力3-25安培	Through current 3-25A
精度±10%,±5%和±2%	Tolerance ±10% , ±5% and ±2%
电阻温度系数低至±40ppm/°C	TCR down to ±40ppm/°C
符合RoHS、REACH要求	RoHS and REACH compliant
特殊规格可以订做	Customizable



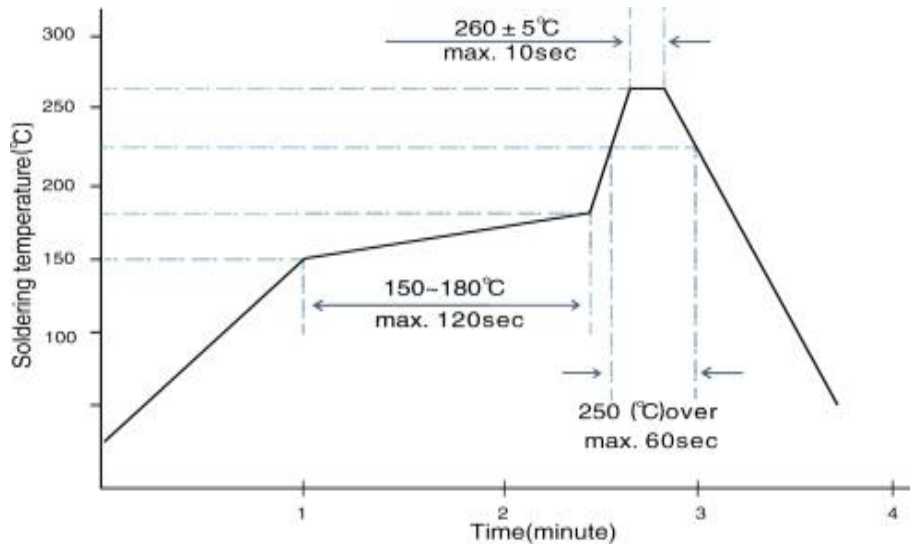
标准电气规范 Standard Electrical Specifications

线径/mm	过电流/A	跨距/mm 阻值可选范围/mΩ					
		5	10	15	20	25	30
0.5	3	30~160	45~175	60~190	75~205	90~220	105~235
0.6	4	25~110	35~120	45~130	55~140	65~150	75~160
0.7	5	15~80	22~87	29~94	35~100	42~107	49~114
0.8	5.5	12~60	17~65	22~70	28~75	33~80	39~85
0.9	6	10~48	14~52	18~56	22~60	26~64	30~68
1.0	7	7.5~38	11~41	14~43	18~46	21~49	24~52
1.1	7.5	6~32	9~35	12~37	15~40	18~43	21~47
1.2	8	5~25	7.5~28	10~31	12.5~34	15~37	18~40
1.3	8.5	4.5~23	6.5~25	8.5~27	11~29	13~31	15~33
1.4	9	3.5~19	5.5~21	7~23	9~25	11~27	13~29
1.5	9.5	3~16	4.5~17	6~28	7.5~20	9~23	11~24
1.6	10	/	4~15	5.5~17	6.5~19	8~21	10~23
1.8	12	/	3.5~12	4.5~13	5.5~14	6.5~15	7.5~17
2.0	15	/	3~9.5	3.5~11	4.5~12	5.5~13	6~14
2.3	18	/	2.2~7.5	2.8~8	3.5~8.5	4~9	4.8~10
2.5	20	/	1.8~6.5	2.3~7	2.8~7.5	3.3~8	3.8~8.5
3.0	25	/	1~4	1.3~4.3	1.6~4.6	1.9~4.9	2.2~5.2

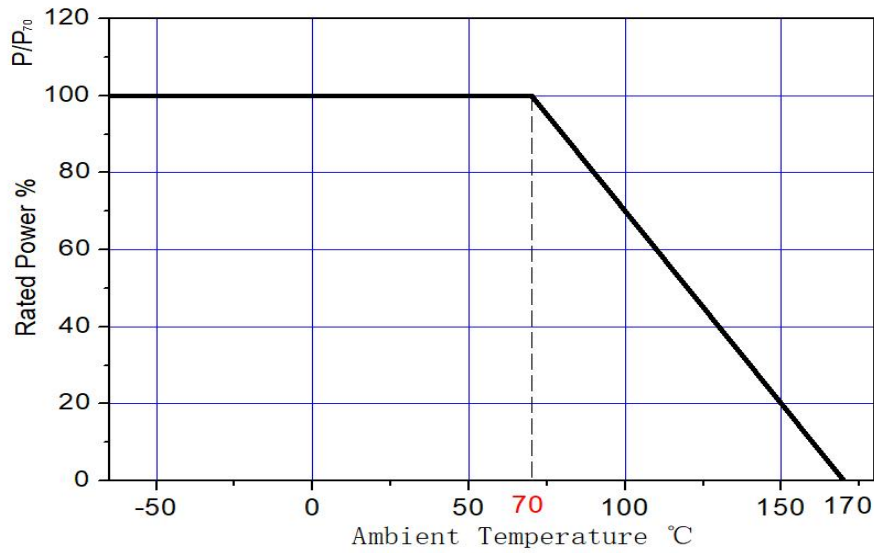
TCR (ppm/°C) : Test conditions at 20°C~120°C.

产品性能 Functional Performance

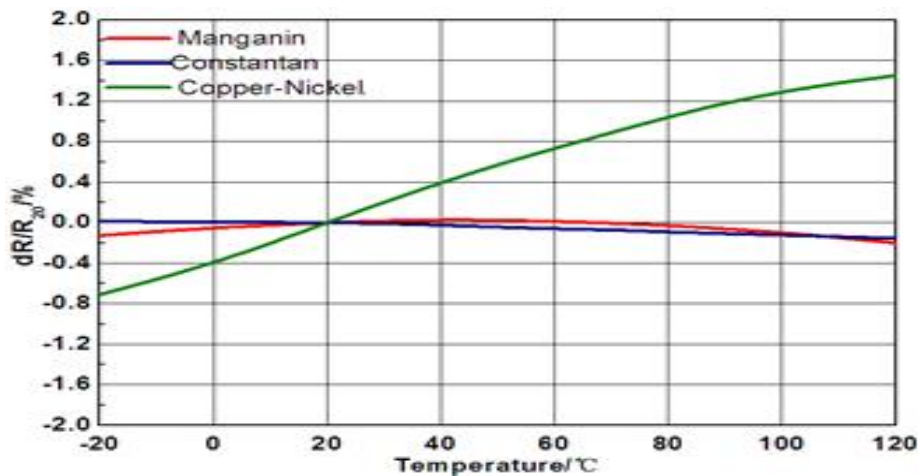
回流焊温度曲线
Solder Reflow Temperature Condition



降功率曲线 Power Derating Curve



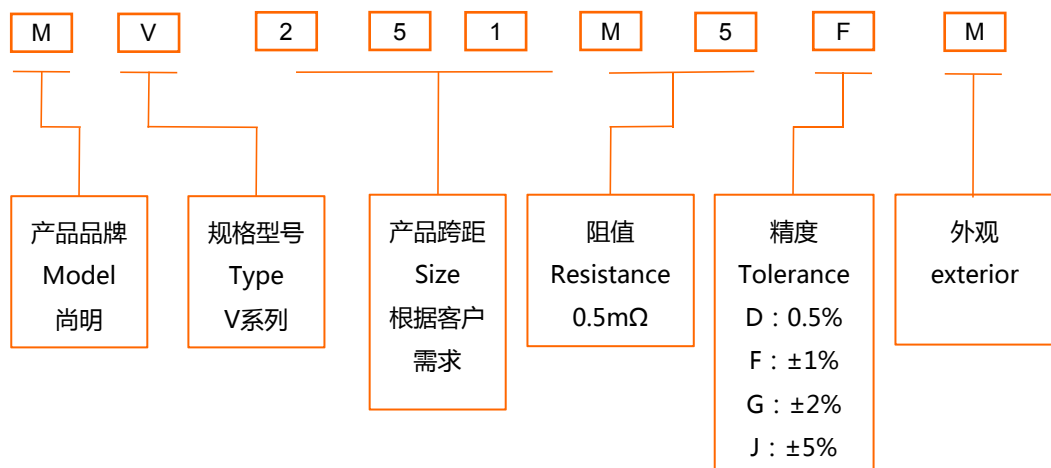
温度系数曲线 TCR Derating



耐久性测试 Endurance Test

Items	Additional Requirements	Reference	Limits
Operational Life	70±2°C, 1000h Rated voltage (90 min ON, 30 min OFF)	MIL-STD-202 Method 108	±1%
Biased Humidity	1000hrs 85°C/85%RH. Note:Specified conditions:10% of operating power.	MIL-STD-202 Method 103	±1%
Temperature Cycling	1000 Cycles(-55°C to +125°C)	JESD22 Method JA-104	±1%
Solderability	245°C±5°C,5s±0.5s	J-STD-002C	95% Coverage Minimum
Short Time Overload	5×Rated power for 5 s	MIL-STD-202 Method 301	±1%
Resistance to Soldering Heat	260°C±5°C , 10s±1s	MIL-STD-202 Method 210	±0.5%
Vibration	(10 - 2000 Hz) ,5 g's for 20 min, 12 cycles each of 3axis.	MIL-STD-202 Method 204	±0.5%

产品型号说明 Part Number Description

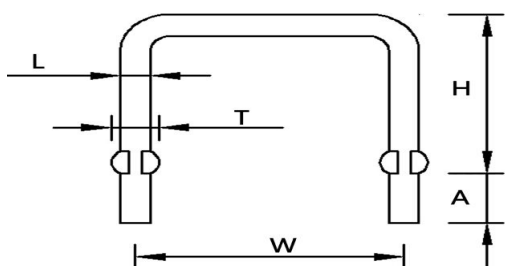


外观 exterior

代号 Symbol	示例图 Sample graph	代号 Symbol	示例图 Sample graph
V		M	
MM		Mz	
vh		VZ	
vn		VS	

标准尺寸规格 Standard Size

L/mm	W/mm	H/mm	A/mm	T/mm
0.5~3.0	5~30	5~30	3.5±0.2	0.75~3.3



订货提供
 1.线径或板孔大小 "L" 2.额定电流
 3.跨距 "W" 4.高度范围 "H"
 NOTE:
 Contact YeZhan for:
 1.Variations of "L"
 2.Rated current
 3.Variations of "W"
 4.Variations of "H"

包装Packaging

散装，内外双包装 Bulk, Internal And External Package