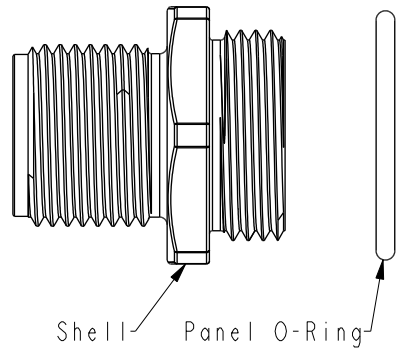
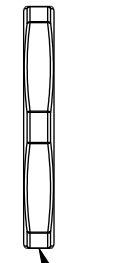


THIS DOCUMENT IS SUBJECT TO CHANGE WITHOUT NOTICE. IT IS CONFIDENTIAL AND A PROPERTY OF Amphenol LTW. DISCLOSURE TO THIRD PARTY HAS TO BE AUTHORIZED BY Amphenol LTW.

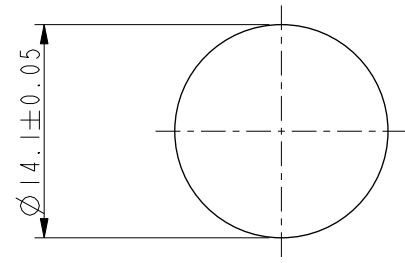
REV.	ECN NO.	DATE	SIGN	DESCRIPTION
A		2020-09-04	Allen Pan	Rev.01 To Rev.A
B	C201590	2020-10-19	Allen Pan	$\triangle B \times I$



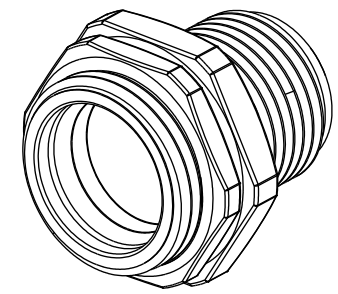
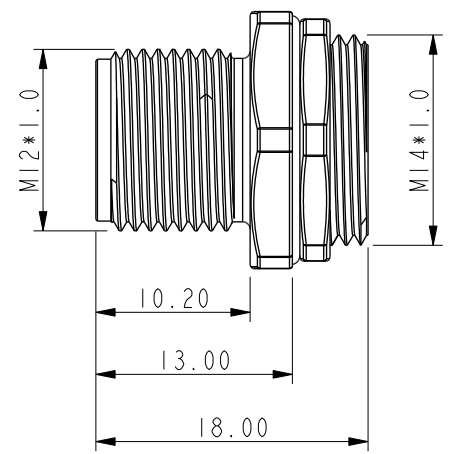
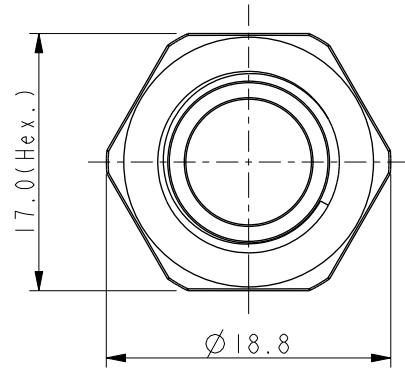
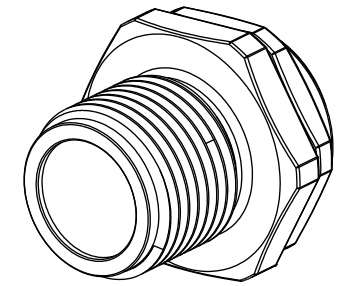
Shell Panel O-Ring



Nut



Recommended Panel Cut-out



- Note:
- 1.Shell: Metal.
 - 2.Nut: Metal.
 - 3.Panel O-Ring: Rubber, Gray.
 - 4.For Panel Thickness Max 3mm.
 - 5.Recommended Nut Torque: 4-6kgf.cm.

UNIT:mm			TITLE $\triangle B$ M12 SMT Male Rear Fastened Hexagonal Nut Package
TOLERANCE .X ±0.25 .XX ±0.1 .XXX ±0.05 ANGLES ±1°	SCALE 2:1	SIZE A4	SHEET 1 OF 1
REV. B	WC-REV. A.1	Inspection item	

Amphenol LTW
安費諾亮泰企業股份有限公司

ITEM NO. APPM-AAAMA012-002	DRAWN BY Allen Pan	DATE 2020-09-04
DWG NO. APPM-AAAMA012-002	CHECKED BY Sam Ho	DATE 2020-09-04
CUSTOMER ALTW	APPROVED BY Fred Lee	DATE 2020-09-04